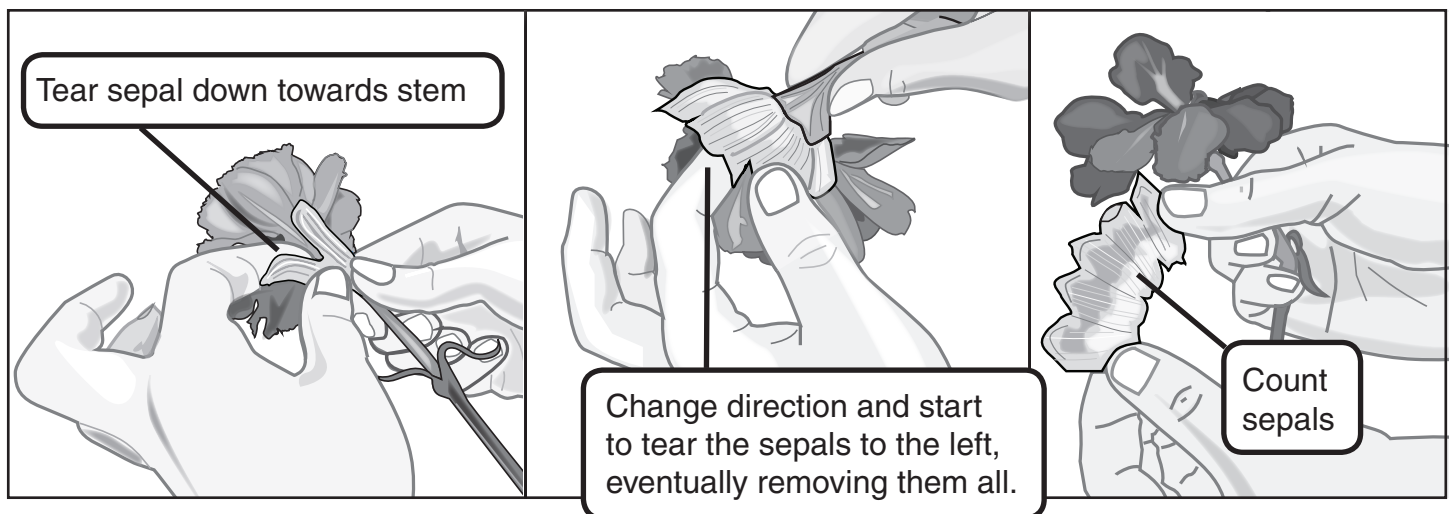


Flower Dissection Guide

- 1.** You will record data during your dissection in your student notebook.
- 2.** Observe the flower given to you by your teacher. Sketch your entire flower in your student notebook. Remember, you can use your hand lens throughout the dissection to get a closer look at the flower's parts.
- 3.** Use your ruler to measure the length of the stem in centimeters. Record your measurement and then attach the stem to your notebook. (If the stem is too long, attach a piece of the stem or draw a picture of it.)
- 4.** Locate a leaf and carefully remove it. Measure and record the length of the leaf. Attach the leaf to your notebook.
- 5.** Locate the green sepals underneath the flower. Tuck your finger beneath one and gently tear the green sepal down towards the stem.
- 6.** Once you cannot tear the sepal any further, change direction and start to tear the sepals to the left, eventually removing them all. How many sepals does your flower have? Record this total in your notebook.
- 7.** Pick one sepal and measure it from top to bottom. Record this measurement and attach a sepal to your notebook.



- 8.** Your flower's petals should now be loose and easy to remove. Remove each petal carefully. (If you accidentally remove another structure besides a petal, set it aside for later.) After you are done, count up how many petals your flower has and record it.
- 9.** Pick one petal and measure its length. Record this measurement and attach the petal to your notebook.
- 10.** Locate the stamen of the flower. If you remember, these parts make pollen needed for reproduction. Carefully remove all the stamen from your flower and record the total in your notebook.
- 11.** Choose one stamen to measure and attach to your notebook.
- 12.** Locate the pistil of the flower and record the number of pistils in your notebook.
- 13.** You should also notice the large ovary at the bottom of the pistil. Carefully grab the pistil, at the ovary, and gently twist to remove it from the flower.
- 14.** Measure the length of the entire pistil and record and attach it to your notebook.
- 15.** Once the pistil is attached, label the ovary.
- 16.** Your dissection is complete! Clean up your area. Throw all of the plant parts in the trash with the paper towel. Place all of your dissection tools on the foam tray and return them to the area your teacher tells you.